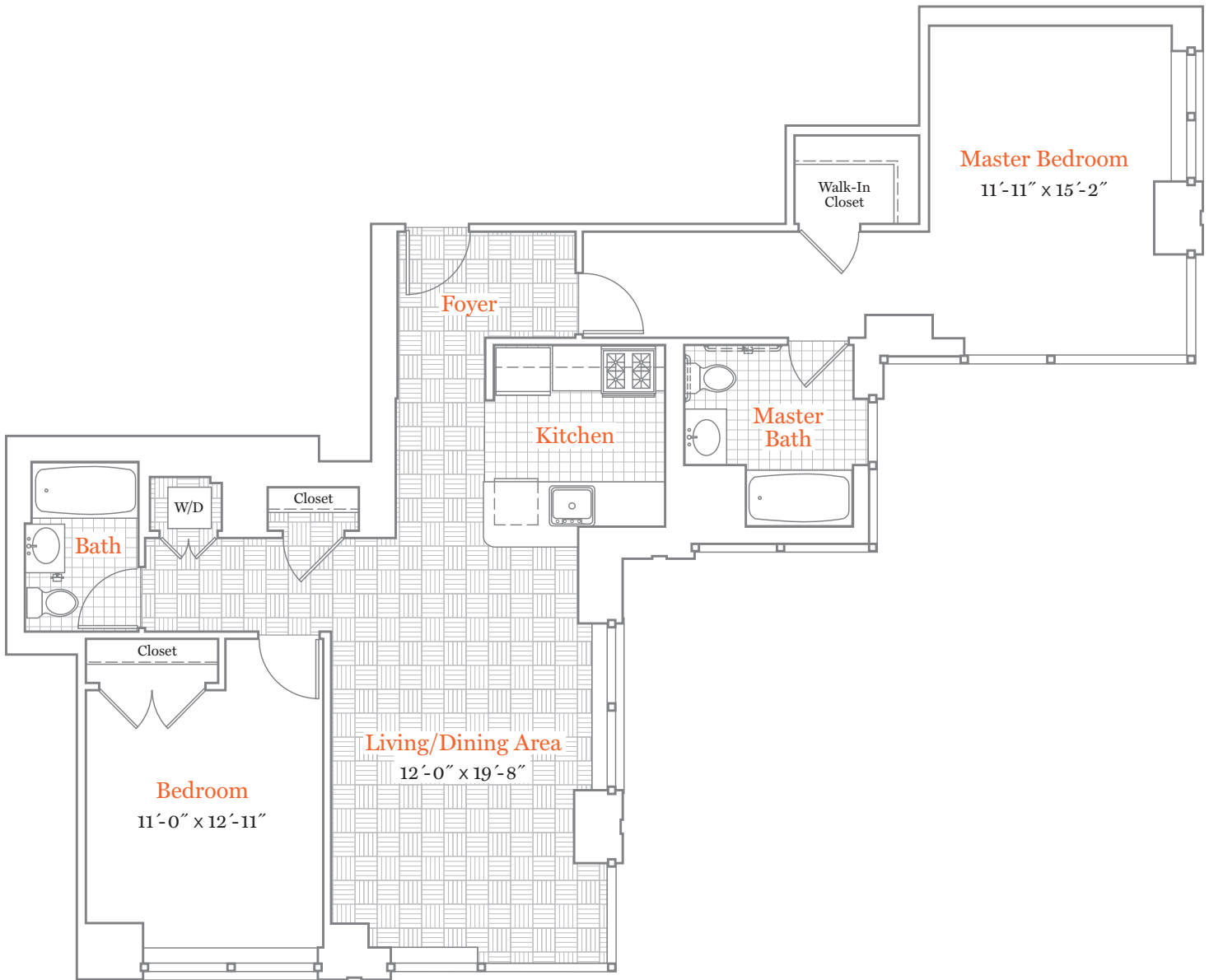
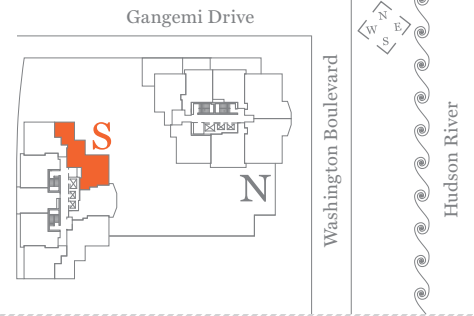




475 Washington Blvd | Jersey City, NJ 07310

p. 201.239.9000 | f. 201.239.9600 | [monacojc.com](http://monacojc.com)



## B3-S

2 Bed 2 Bath | 1,130-1,137 sf | Floors 14-49

Floor plans are artist's renderings and accuracy cannot be guaranteed. Approximate unit area determined by measuring from the center line of demising walls and the plane of the center line of exterior wall window glass, with no deduction for chases, structural columns or similar items. Features are subject to change without notice or obligation. Features may also be altered to keep pace with ongoing design improvement program. This brochure is for illustrative purposes only and is not part of a legal contract.

